

# G3000 Glasswall

*Movable Partitions*

## **Operation & Maintenance Manual Type G3000 Glasswall Double Point**

Index

Introduction ..... 3

Warranty..... 4

Project Details ..... 5

Operating Instructions ..... 6

Cleaning..... 10

Maintenance ..... 10

Contact Details..... 11

## Introduction

Thank you very much for purchasing your HUF COR mobile partition wall.

The Hufcor Partitions for this installation have been custom made to the architect's and owner's specifications. Each partition has been carefully fabricated and installed to provide many years of trouble-free service. The key to life of the product is proper operation, care and maintenance. The correct operation and recommended care are outlined in this **Owner's Manual** for your guidance. If any malfunction of these partitions occurs, please phone your local Hufcor Distributor for service. This must be done immediately since Hufcor cannot be responsible for damages which result from delays or failure to advise Hufcor or Hufcor's local Distributor.

*This operation manual can also be downloaded on our website [hufcor.com](http://hufcor.com)*

## Warranty

HUFCOR Operable Walls are guaranteed against defects in material and/or workmanship for a period of 24 months from the date of installation excluding any abuse or incorrect operation of the product.

We reserve the right to withdraw the warranty where any payments due are outstanding.

A service by Hufcor or an approved distributor (please contact Hufcor for details of approved distributors) must be carried out after every 200 opening/closing cycles or 12 months, whichever is sooner. Failure to service the wall correctly will invalidate the warranty.

We suggest that this manual is retained within the building manual, but at the same time it would be useful to keep a set with the partition, possibly with the operating handle or, if there is one, within the storage pocket.

The installation should be registered by the end user by completing the details below and sending to Hufcor (preferably by e mail). Please find contact details on **final page**.

End User Name	
Address (for correspondence)	
Contact Number	
Contact Email	

## Project Details

Sales Centre Name:	
Sales Centre Number:	
Sales Centre Reference:	
Month/Year of Installation:	
Project Name & Address:	
Partition Model:	
Hufcor Reference:	
Panel finish:	
Drawing Number(s):	

# Operating Instructions

## General Notes

1. Operable wall partition systems are simple to operate as long as the correct sequence of operation and handling instructions are followed.
2. Restrict the movement of panels to only those personnel who are familiar with their operation.
3. Ensure that each sequence of operation is performed at a steady pace – do not rush.
4. Never force or apply unnecessary pressure when moving the panels into or out of their stacking location.
5. Report problems immediately should the panels become stiff to operate or malfunction for whatever reason, as continued use could damage the track or panels.
6. The following notes provide general guidance in respect to moving the panels out of and into their stacked position. If there are any specific instructions particular to this installation, these will be detailed on the following pages.

## To close the partition (moving panels from their stacked location)

1. Face the first panel in the stack and using both hands grip firmly either side of the panel.
2. Gently pull the panel out of its stacked location, turning it within the track such that the leading edge aligns and follows the main track run.
3. Move the panel along the track until it reaches the correct position. Secure in place with the floorbolt at the bottom of the panel into the floor socket.
4. Repeat this procedure with each panel in the parking stack until it engages with the previously positioned panel in the main run. Secure each panel with the floor pin as before.

#### **For Glasswall (with no pivot or intermediate Doors)**

5. If there is no end pivot door or any intermediate doors in the run, the final panel out of the parking area may leave a gap of up to 100mm between the last panel and the adjacent wall. The panel is secured in position either with floor pins or locks which prevent the unauthorized moving of the wall.

#### **For Glasswall (with pivot doors at one or either end)**

6. The pivot doors are fixed and simply fold from their parked position into the line of the wall. They may be fitted with self-closing floor springs.

#### **For Glasswall (with intermediate doors)**

7. Any intermediate doors within the run of the wall are fixed to the adjacent 'Anchor' panel for stability. The door and anchor panel must be moved together and are fixed into position with floor bolts in the anchor panel.

#### **To open the partition (moving panels back into stacked location)**

1. Essentially the operation is a reversal of the above sequence.
2. If there are any pivot doors, move these back into the parked position first.
3. Release the floor bolts of the next panel in the run, move the panel into the parked position.
4. Repeat this procedure until all the panels are in the parked position.
5. If there are any intermediate doors in the run, fold the door back almost 180 degrees so the door is held in position to the anchor panel with the magnetic pads. Move the anchor panel/door panel as above.

#### **Hint**

While moving the panels through intersections avoid stopping. The carriers may stop in an intersection and appear stuck. If this happens, move the panel back in the direction it came from. Try again and avoid stopping while the carriers are in the intersection.

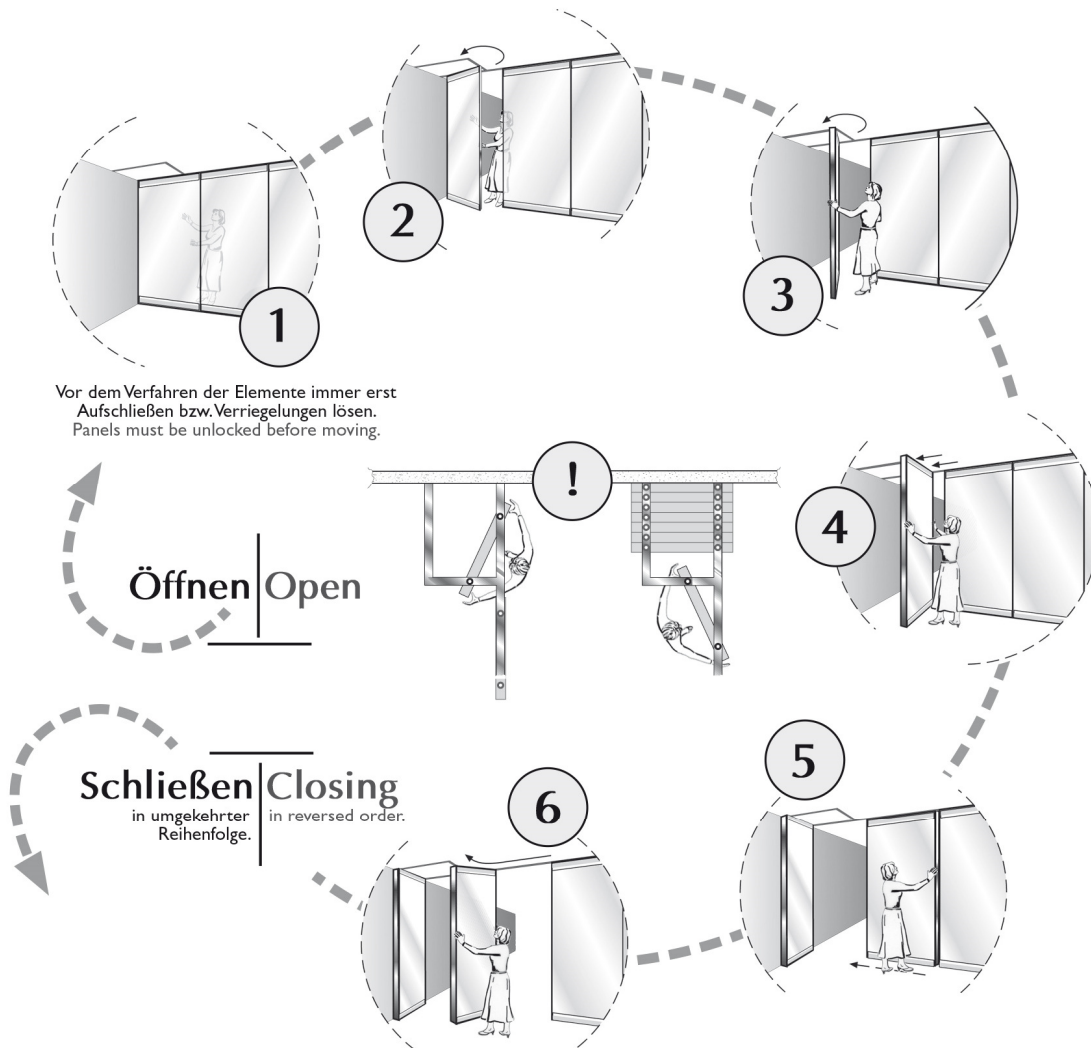
Mobile Trennwand Typ  
movable partition type

Manuelle Verriegelung

**G 3000**

manual locking

Zwei-Punkt-Aufhängung  
Two-point-suspension





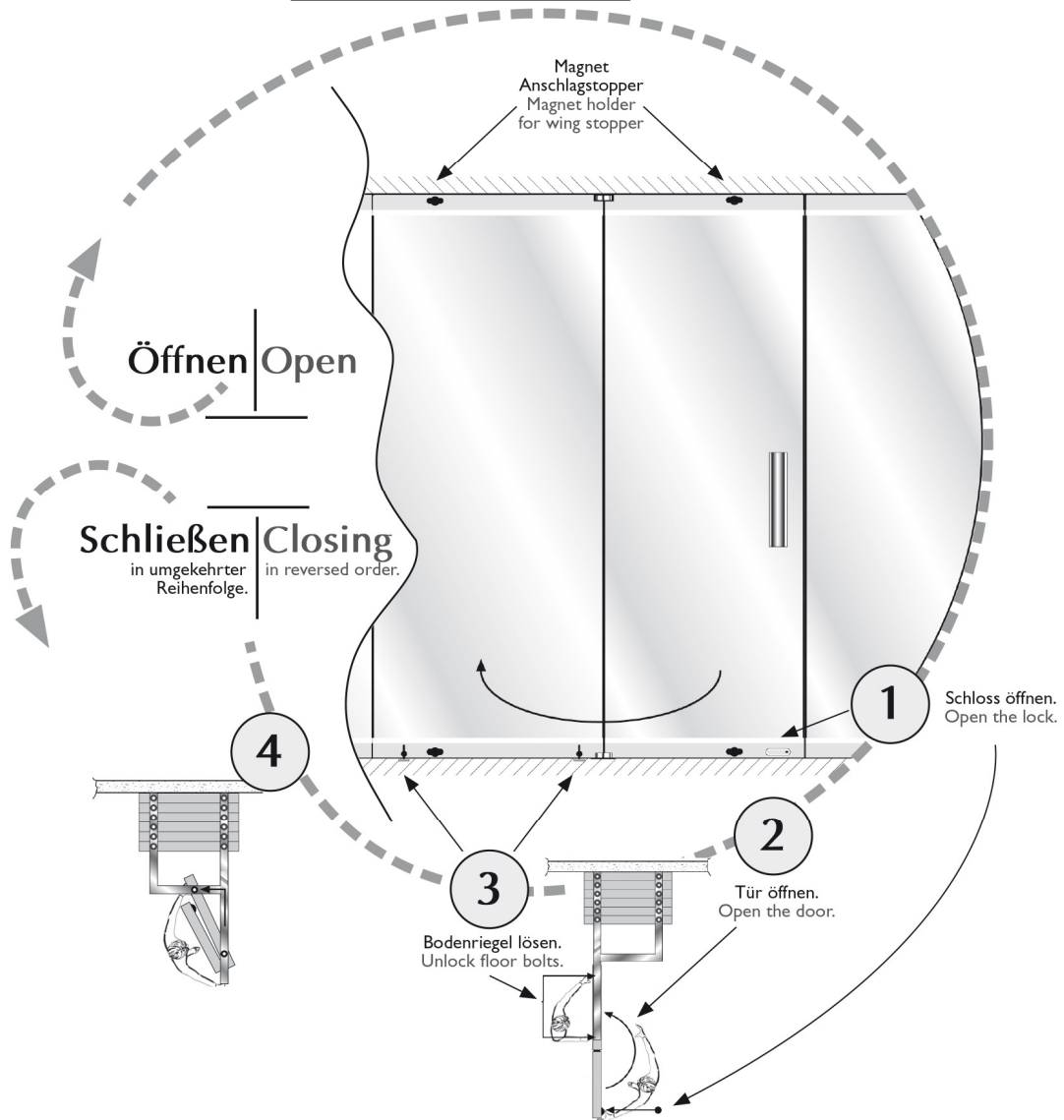
Mobile Trennwand Typ  
movable partition type

Verfahrbare 360° - Tür

**G 3000**

movable 360° door

Zwei-Punkt-Aufhängung  
Two-point-suspension



## Cleaning

First remove any loose dust using a soft brush; the glass surface should then be rinsed with warm water. Best results for cleaning the glass can either be achieved by proprietary glass cleaners and hot water or simply the use of a window leather or squeegee.

## Maintenance

Hufcor partitions are designed to require very little maintenance. However, they should be serviced every 200 opening/closing cycles or 12 months whichever is sooner by Hufcor or an approved distributor to ensure trouble free operation and compliance with the 24 months warranty.

Regular maintenance will involve cleaning of the track & the application lubricant to assist the movement of the carriers.

Locks, hardware and general operation will be checked.

After prolonged use, it may be advisable to change the seals.

Whilst panels and partition units can be removed for repair or replacement, it is important to ensure that any such work is only carried out by HUF COR Deutschland GmbH or approved distributor.

Problems should be reported immediately, particularly if the partition becomes stiff to operate. Refer to the warranty details and project details for further information.

## Address of manufacturer:

### **HUFCOR Deutschland GmbH**

Triftweg 36, 06847 Dessau-Roßlau (GERMANY)

Office +49 340 540796-0

[info@hufcor.de](mailto:info@hufcor.de)

[hufcor.com](http://hufcor.com)